

JOYA™ TOUCH A6



JOYA™ TOUCH A6 IS THE MULTI-PURPOSE DEVICE FOR RETAIL

The new Joya Touch A6 device for use in retail will optimize your ROI and is designed for applications in Self-Shopping, Shop Floor, Access Control and more.

MULTIPLE DEVICES IN ONE

The Joya Touch A6 device comes with a powerful Qualcomm Snapdragon platform and features Android™ 7.1 Nougat (upgradeable to Android 8). This device is available in two form factors: a handheld version resembling a smartphone and a pistol-grip version with a comfortable trigger. Users can change from one form to the other with ease, adapting to applications and user preferences.

CHOICE OF 2 SCAN ENGINES

Joya Touch is available with a choice of two Scan Engines: a fast VGA multi-purpose 2D imager allowing users to read all types of 1D and 2D bar codes or a MegaPixel 2D Imager for improved far scanning performance (UPC/EAN up to 69 cm / 27 in).

Joya Touch A6 with MP imager is the perfect multi-purpose device for activities such as self-shopping, gift registry and queue busting.

WIRELESS CHARGING CRADLE – SINGLE AND 3-SLOT

The Joya Touch A6 device is charged using the industry's first wireless charging technology that eliminates the need for cleaning the contacts on the device and cradles. It radically reduces support costs and increases its life span.

The multi-bay cradle and single cradles support both handheld and pistol-grip models of the device, ensuring the right configuration for every use or application.

DIGIMARC® WATERMARKED BAR CODES

Joya Touch A6 is ready for the future being the first mobile computer to read Digimarc bar codes.

BOOST AND FAST CHARGING

The Joya Touch A6 device requires only 2 hours to fully charge the battery and the Boost Recharge feature ensures quick recharging. Six charging profiles are available to let the user decide which profile better suits their needs.

FEATURES

- Multi-purpose device: handheld or pistol-grip
- Android 7.1 Nougat (upgradeable to Android 8)
- Wireless charging eliminates all contacts on the device and cradle
- Supports both Boost and Fast charging modes
- VoIP phone capabilities over Wi-Fi
- Reads Digimarc watermarked bar codes
- Presentation mode allows automatic scanning
- Datalogic SoftSpot™ technology for innovative triggering through the touch display
- 3-Axis Accelerometer auto-rotates the screen orientation
- 4.3 inch capacitive multi-touch FWVGA display with Gorilla® Glass 3
- Vibration alert for notifications
- Fully supports Datalogic's self-shopping middleware Shopevolution™ or third-party software
- Beacon support via BLE for geolocation
- Advanced 2D imaging technology with choice of VGA or Megapixel imagers
- Datalogic's patented 'Green Spot' technology for visual good-read feedback
- EASEOFCARE Service Plans offer a wide range of service options to protect your investment, ensuring maximum productivity and ROI.

INDUSTRY - APPLICATION

- Retail:
 - Self- Shopping
 - Queue-Busting
 - Inventory
 - Access Control
 - Gift Registry
 - Shop Floor Applications
 - Assisted Sales



JOYA™ TOUCH A6

TECHNICAL SPECIFICATIONS

WIRELESS COMMUNICATIONS

Local Area Network (WLAN)	IEEE 802.11 a/b/g/n; Wi-Fi Security Standards: WEP, WPA/WPA2 PSK, 802.1x EAP: PEAP/MSCHAPV2, PEAP/GTC, TLS, TTLS/PAP, TTLS/MSCHAP, TTLS/MSCHAPV2, TTLS/GTC, PWD
Personal Area Network (WPAN)	Bluetooth® wireless technology v4.0 - Dual Mode (Classic Bluetooth wireless technology and BLE available)
NFC Communication	NFC communication between device and cradle

DECODING CAPABILITY

1D / Linear Codes	Auto discriminates all standard 1D codes including GS1 DataBar™ linear codes.
2D Codes	Aztec Code, Data Matrix, MaxiCode, PDF417, MicroPDF417, Micro QR Code, QR Code
Postal Codes	Australian Post, Japanese Post, KIX Code, Royal Mail, USPS Intelligent Mail, USPS PLANET, USPS POSTNET
Digital Watermarks	Supports Digimarc® Barcode (optional)

ELECTRICAL

Battery	Replaceable battery pack with rechargeable Li-Ion batteries; 3.7 V; 3,000 mAh (12 Watt-hours)
Wireless Charging	Two charging options: Fast charging or Standard charging

ENVIRONMENTAL

Drop Resistance	Withstands repeated drops from 1.2 m / 4.0 ft onto plywood and 1.5 m / 5 ft onto plywood with the rubber boot accessory
Temperature	Operating: -10 to 50 °C / 14 to 122 °F

INTERFACES

Interfaces	USB 2.0 Client (with standard Micro-USB connector) SDXC card slot (not user accessible)
-------------------	---

USER INTERFACES

Accelerometer	3-Axis accelerometer
SoftSpot Technology	Virtual trigger/scan key
Trigger	Pistol-grip models only
Vibration	Software programmable

IMAGE CAPTURE

Black and White Via Scan Engine	Auto contrast and brightness; Auto noise removal; Exposure and illumination controls
--	--

PHYSICAL CHARACTERISTICS

Color Customization	Top case and battery covers (both handheld and pistol-grip models) and Scan Trigger (pistol-grip models) are available in various standard or custom colors
Colors (Standard)	Enclosures: Light Grey and Dark Grey Battery Covers: Blue, Red, Green, Orange, Yellow, Light Grey
Display	4.3 inch full touch TFT-LCD color display; FWVGA: 854 x 480 pixels; 16M colors, LED backlight
Touch Screen	Capacitive, multi-touch, Gorilla® Glass 3
Physical Keys	Handheld: Home/scan fully programmable key Pistol-Grip: Home/scan fully programmable key, Scan Trigger key
Lighting	Software programmable, lights at the bottom of the battery cover
Dimension	Handheld: 14.5 x 7.7 x 3.4 cm / 5.7 x 3.0 x 1.3 in Pistol-Grip: 14.5 x 7.7 x 11.6 cm / 5.7 x 3.0 x 4.5 in
Weight	Handheld: 275 g / 9.7 oz Pistol-Grip: 305 g / 10.7 oz

SAFETY & REGULATORY

Agency Approvals	The product meets necessary safety and regulatory approvals for its intended use.
Environmental Compliance	Complies to EU RoHS

READING PERFORMANCE

Depth of Field (VGA Models)	4.5 to 37.4 cm / 1.8 to 14.7 in on UPC/EAN 13
Depth of Field (MP Models)	5.3 to 69.2 cm / 2.1 to 27.2 in on UPC/EAN 13
Minimum Resolution	Linear codes at 4 mils; 2D codes at 5 mils
Reading Indicators	Loudspeaker (Polyphonic); Datalogic's patented 'Green Spot' technology for visual good-read feedback

SOFTWARE

Configuration and Maintenance	Datalogic X Platform Configuration Utility (DXU)
Development	Java and Xamarin SDK available

SYSTEM

Memory	System RAM: 2 GB; System Flash: 16 GB Flash Disk SD Card: Factory installed option
CPU	Qualcomm Snapdragon Quadcore 1 GHz
Operating System	Android 7.1 Nougat

WARRANTY

Warranty	1-Year Factory Warranty
-----------------	-------------------------



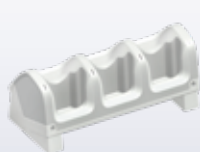
Caution: Laser Radiation - do not stare into beam

ACCESSORIES

Cradles and Holders



91ACC0043 3-Slot Cradle-Wall Mount



91ACC0069 3-Slot Cradle-General Purpose



91ACC0072 Single Slot Cradle Locking



91ACC0073 Single Slot Cradle Charge only

Miscellaneous



91ACC0047 Trolley Holder (60 pcs)



91ACC0079 Rubber Boot



91ACC0080 Holster



91ACC0036 Lanyard